

The *Dymola* Thermo-Bond-Graph Library

- In this lecture, we shall introduce a third bond-graph library, one designed explicitly to deal with *convective flows*.
- To this end, we shall need to introduce a new type of bonds, bonds carrying in parallel three distinct, yet inseparable, power flows: a *heat flow*, a *volume flow*, and a *mass flow*.
- These new *bus-bonds*, together with their corresponding *bus-0-junctions*, enable the modeler to describe convective flows at a high abstraction level.
- The example of a *pressure cooker* model completes the presentation.

November 22, 2012

© Prof. Dr. François E. Cellier

Start Presentation



Table of Contents

- Thermo-bond graph connectors
- A-causal and causal bonds
- Bus-junctions
- Heat exchanger
- Volume work
- Forced volume flow
- Resistive field
- Pressure cooker
- Capacitive fields
- Evaporation and condensation
- Simulation of pressure cooker
- Free convective mass flow
- Free convective volume flow
- Forced convective volume flow
- Water serpentine
- Biosphere 2

November 22, 2012

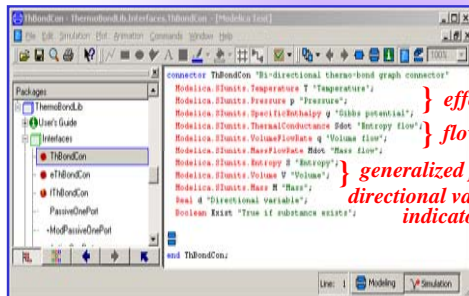
© Prof. Dr. François E. Cellier

Start Presentation



The Thermo-Bond Graph Connectors I

- We shall need to introduce new *thermo-bond graph connectors* to carry the six variables associated with the three flows. They are designed as an *11-tuple*.



```

signature';      } efforts, e
e';
'Gibbs potential';
Pdot 'Entropy flow'; } flows, f
'Volume flow';
Mass flow';

1) } generalized positions, q
   } directional variable, d
   } indicator variable
str';

```



The thermo-bond connector icon is a red dot.

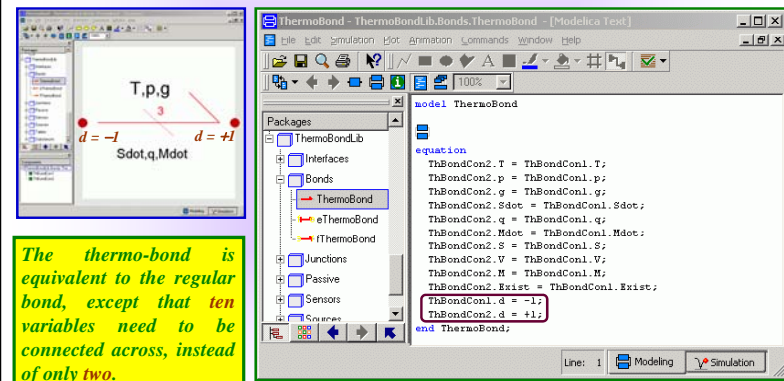
November 22, 2012

© Prof. Dr. François E. Cellier

Start Presentation



The A-Causal Thermo-Bond Model



The thermo-bond is equivalent to the regular bond, except that **ten** variables need to be connected across, instead of only **two**.

November 22, 2012

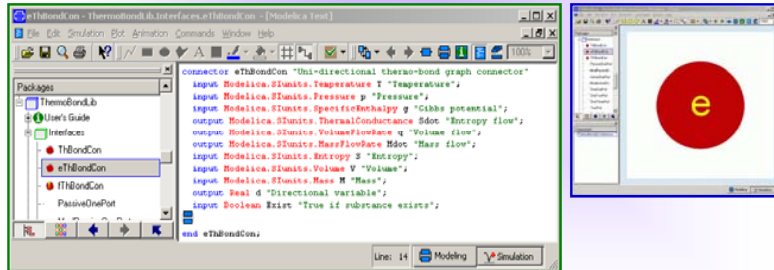
© Prof. Dr. François E. Cellier

Start Presentation



The Thermo-Bond Graph Connectors II

- Like in the case of the general bond-graph library, also the thermo-bond-graph library offers *causal* next to *a-causal* bonds.



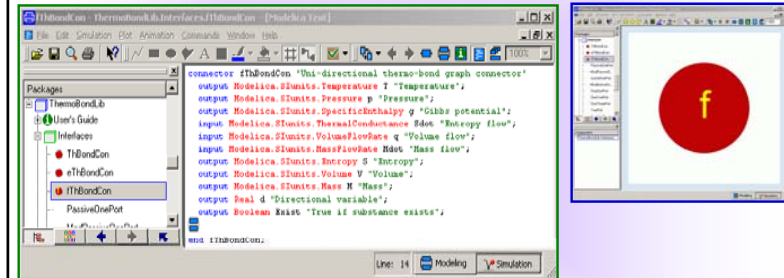
November 22, 2012

© Prof. Dr. François E. Cellier

Start Presentation



The Thermo-Bond Graph Connectors III



- Either the three efforts or the three flows are treated as input variables.

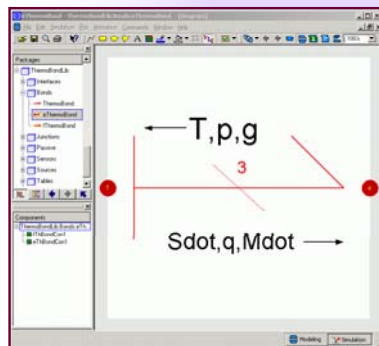
November 22, 2012

© Prof. Dr. François E. Cellier

Start Presentation



The Causal Thermo-Bond Blocks



- Using these connectors, causal thermo-bond blocks can be defined.
- The *f-connector* is used at the side of the causality stroke.
- The *e-connector* is used at the other side.
- The causal thermo-bond-graph connectors are only used in the context of the thermo-bond blocks. Everywhere else, the a-causal thermo-bond-graph connectors are to be used.

November 22, 2012

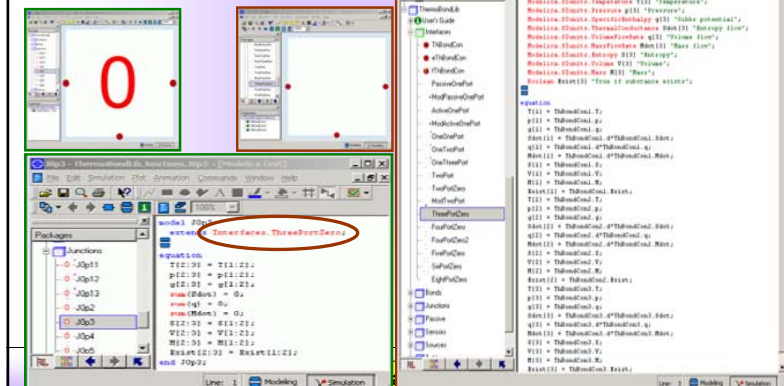
© Prof. Dr. François E. Cellier

Start Presentation



The Bus-0-Junctions

The junctions can now be programmed. Let us look at a *bus-0-junction with three bond attachments*.



ETH
Eidgenössische Technische Hochschule Zürich
Swiss Federal Institute of Technology Zürich

Mathematical Modeling of Physical Systems

Special Bus-0-Junctions I

Boolean signal connector

Thermo-bond connector

Regular bond connector

November 22, 2012 © Prof. Dr. François E. Cellier Start Presentation

ETH
Eidgenössische Technische Hochschule Zürich
Swiss Federal Institute of Technology Zürich

Mathematical Modeling of Physical Systems

Special Bus-0-Junctions II

November 22, 2012 © Prof. Dr. François E. Cellier Start Presentation

ETH
Eidgenössische Technische Hochschule Zürich
Swiss Federal Institute of Technology Zürich

Mathematical Modeling of Physical Systems

The Heat Exchanger

November 22, 2012 © Prof. Dr. François E. Cellier Start Presentation

ETH
Eidgenössische Technische Hochschule Zürich
Swiss Federal Institute of Technology Zürich

Mathematical Modeling of Physical Systems

The Thermo-Bond Heat Exchange Element

Heat is only exchanged, if both substances to the left and to the right exist.

The conductance is split in two. Half goes to the left, half to the right.

The specific thermal conductance λ is imported into the model as a modulating signal.

Conversion from thermo-bonds to regular bonds

November 22, 2012 © Prof. Dr. François E. Cellier Start Presentation

ETH
 Eidgenössische Technische Hochschule Zürich
 Swiss Federal Institute of Technology Zürich

Mathematical Modeling of Physical Systems

The Volume Work

November 22, 2012
© Prof. Dr. François E. Cellier
Start Presentation

ETH
 Eidgenössische Technische Hochschule Zürich
 Swiss Federal Institute of Technology Zürich

Mathematical Modeling of Physical Systems

The Pressure Volume Exchange Element

We pick up the two pressures. The difference between the two pressures causes a negative volume flow.

The surplus power is split in two to be converted into additional entropy.

The generated entropy is delivered back to the thermal ports.

November 22, 2012
© Prof. Dr. François E. Cellier
Start Presentation

ETH
 Eidgenössische Technische Hochschule Zürich
 Swiss Federal Institute of Technology Zürich

Mathematical Modeling of Physical Systems

Forced Volume Flow I

The forced volume flow causes a proportional forced mass flow and an also proportional forced entropy flow.

November 22, 2012
© Prof. Dr. François E. Cellier
Start Presentation

ETH
 Eidgenössische Technische Hochschule Zürich
 Swiss Federal Institute of Technology Zürich

Mathematical Modeling of Physical Systems

Forced Volume Flow II

- The model presented here cannot yet be used to represent e.g. a *pump* or a *compressor*, because it doesn't consider the power needed to move the fluid around.
- The model is acceptable to describe small mass movements such as pressure equilibrations between the bulk and a (mathematical) boundary layer.
- An improved forced volume flow model shall be discussed later in this lecture.

November 22, 2012
© Prof. Dr. François E. Cellier
Start Presentation

ETH
Eidgenössische Technische Hochschule Zürich
Swiss Federal Institute of Technology Zürich

Mathematical Modeling of Physical Systems

The Resistive Field

The generated entropy is reinserted in the direction of the flow.

Due to the potential differences in the three potentials, additional entropy is being generated.

Proportional mass and heat flows are caused by the forced volume flow.

Forced volume flow

November 22, 2012

© Prof. Dr. François E. Cellier

Start Presentation

ETH
Eidgenössische Technische Hochschule Zürich
Swiss Federal Institute of Technology Zürich

Mathematical Modeling of Physical Systems

Pressure Equilibration With Constant Volume

- Sometimes it is useful to allow a mass flow to take place, while the volume doesn't change (remember the gas cartridge).

Pressure equilibration causes a volume flow to occur.

A flow sensor element measures the volume flow taking place.

A counter volume flow of equal size is forced.

The pressure gets equilibrated, but the volume remains the same.

November 22, 2012

© Prof. Dr. François E. Cellier

Start Presentation

ETH
Eidgenössische Technische Hochschule Zürich
Swiss Federal Institute of Technology Zürich

Mathematical Modeling of Physical Systems

The Pressure Cooker I

November 22, 2012

© Prof. Dr. François E. Cellier

Start Presentation

ETH
Eidgenössische Technische Hochschule Zürich
Swiss Federal Institute of Technology Zürich

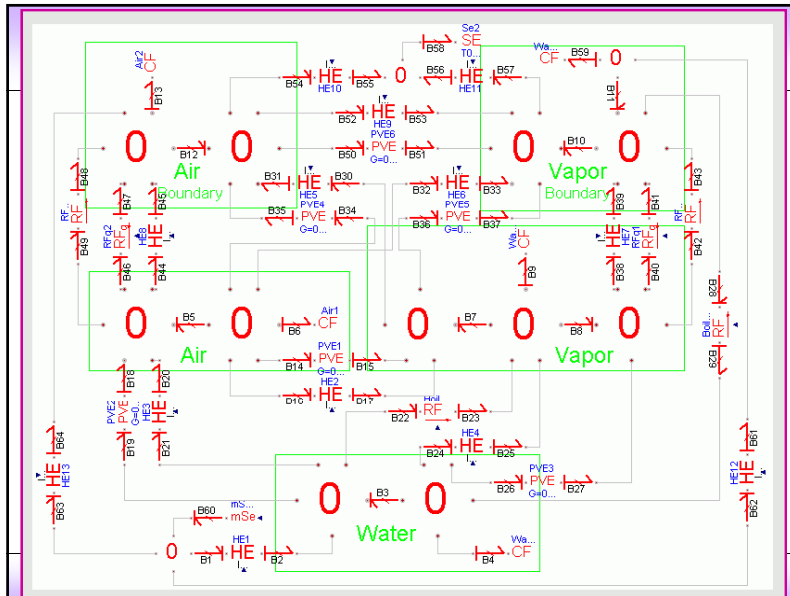
Mathematical Modeling of Physical Systems

The Pressure Cooker II

November 22, 2012

© Prof. Dr. François E. Cellier

Start Presentation



Capacitive Fields

- Let us look at the capacitive field for air.



Linear capacitive field:

$$\text{der}(\underline{e}) = C^{-1} \cdot \underline{f}$$

By integration:

$$\text{der}(\underline{q}) = \underline{f}$$

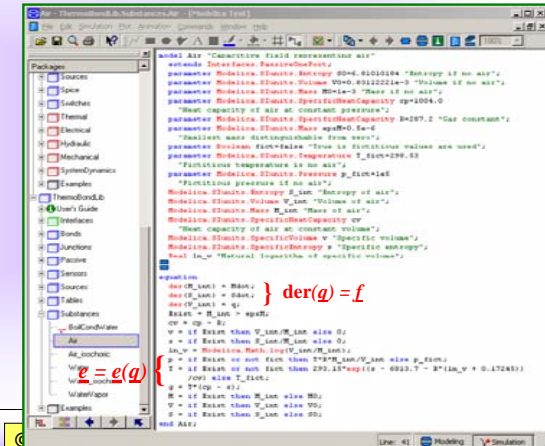
$$\underline{e} = C^{-1} \cdot \underline{q}$$

Non-linear capacitive field:

$$\text{der}(\underline{q}) = \underline{f}$$

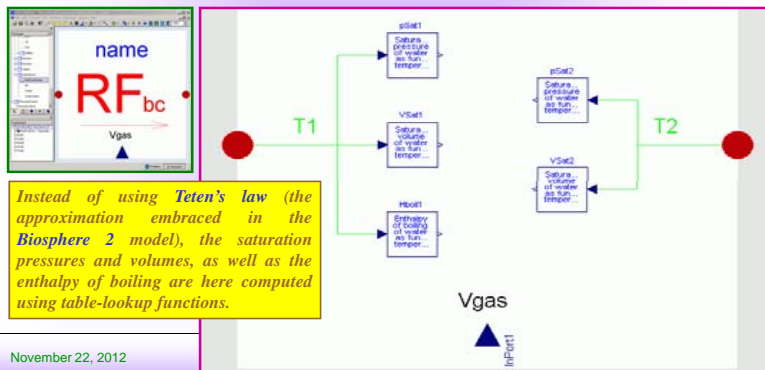
$$\underline{e} = \underline{e}(\underline{q})$$

November 22, 2012



Evaporation and Condensation I

- The models describing *evaporation* and *condensation* are constructed by interpolation from steam tables.



Instead of using Teten's law (the approximation embraced in the Biosphere 2 model), the saturation pressures and volumes, as well as the enthalpy of boiling are here computed using table-lookup functions.

Evaporation and Condensation II

```

model BoilCondWater "Boiling and condensation of water"
extends Interfaces.ModFlowPort(InPort
    Modelica.SUnitcs.Volume));
parameter Real Kb(units="m.s") = 0.0;
parameter Real Kc(units="m.s") = 0.0;
Modelica.SUnitcs.Pressure pSat_liq;
Modelica.SUnitcs.Pressure pSat_gas;
Modelica.SUnitcs.SpecificVolume vSat;
Modelica.SUnitcs.SpecificVolume vSat;
Modelica.SUnitcs.SpecificEnthalpy h;
Modelica.SUnitcs.Volume Vgas;
Modelica.SUnitcs.Pressure pgas;
Modelica.SUnitcs.MassFlowRate mBoil;
Modelica.SUnitcs.MassFlowRate mCond;
Boolean fd "True if forward flow";
Modelica.SUnitcs.MassFlowRate DeltaQdot;
Heat generated by potential equil;
Boolean Exist "True if flow exists";
Modelica.SUnitcs.Mass hRef;
Modelica.SUnitcs.AngularFrequency x;
Modelica.SUnitcs.ThermalConductance;
Modelica.SUnitcs.ThermalConductance;
Modelica.SUnitcs.Volume vSteam;
Real hum1 "Relative humidity compute";
Real hum2 "Relative humidity compute";
equation
    pSat1.u = T1;
    pSat2.u = T2;
    vSat1.u = T1;
    vSat2.u = T2;
    hBoil1.u = T1;
    pSat_liq = pSat1.y;
    pSat_gas = pSat2.y;
    vSat_liq = vSat1.y;
    vSat_gas = vSat2.y;
    hBoil = hBoil1.y;
    vgas = v;
    pgas = p*V2/Vgas;
    mBoil = if ((pSat_liq > p1) and Exist1) then Kb*(pSat_liq - p1) else 0;
    mCond = if ((pSat_gas < pgas) and Exist2) then Kc*(pgas - pSat_gas) else 0;
    Mdot1 = p1 - mCond;
    Mdot2 = Mdot1;
    q1 = mBoil*vSat_liq - mCond*vSat_gas;
    q2 = q1;
    fd = Mdot1 > 0;
    DeltaQdot = (q1 - q2)/Mdot1 - (p1 - p2)*q1;
    Exist = (fd and Exist1) or (not fd and Exist2);
    hRef = if fd then M1 else M2;
    x1 = if Exist then Mdot1/hRef else 0;
    Sdot2_aux = if Exist2 then Sdot1 + (DeltaQdot + (T1 - T2)*Sdot1)/T1 else 0;
    Sdot1_aux = if Exist1 then Sdot1 + (DeltaQdot + (T1 - T2)*Sdot2)/T2 else Sdot2;
    Sdot1 = if fd then x1*S1 + hBoil*Mdot1/T1 else Sdot1_aux;
    Sdot2 = if fd then Sdot2_aux else x1*S2 - hBoil*Mdot2/T2;
    vSteam = 1/(p2/pSat_gas - 1)*Vgas;
    hum1 = pgas/pSat_gas;
    hum2 = 1 - V2/vSteam;
end BoilCondWater;

```

A bit messy!

November 22, 2012

A bit messy!

Eidgenössische Technische Hochschule Zürich
Swiss Federal Institute of Technology Zürich

Mathematical Modeling of Physical Systems

Simulation of Pressure Cooker

- We are now ready to compile and simulate the model.

November 22, 2012

© Prof. Dr. François E. Cellier

Start Presentation

Eidgenössische Technische Hochschule Zürich
Swiss Federal Institute of Technology Zürich

Mathematical Modeling of Physical Systems

Simulation Results

November 22, 2012

© Prof. Dr. François E. Cellier

Start Presentation

Eidgenössische Technische Hochschule Zürich
Swiss Federal Institute of Technology Zürich

Mathematical Modeling of Physical Systems

Simulation Results II

Heating is sufficiently slow that the temperature values of the different media are essentially indistinguishable. The heat exchangers have a smaller time constant than the heating.

During the cooling phase, the picture is very different. When cold water is poured over the pressure cooker, air and steam in the small boundary layer cool down almost instantly. Air and steam in the bulk cool down more slowly, and the liquid water cools down last.

November 22, 2012

© Prof. Dr. François E. Cellier

Start Presentation

Eidgenössische Technische Hochschule Zürich
Swiss Federal Institute of Technology Zürich

Mathematical Modeling of Physical Systems

Simulation Results III

The pressure values are essentially indistinguishable throughout the simulation.


During the heating phase, the pressures rise first due to rising temperature. After about 150 seconds, the liquid water begins to boil, after which the pressure rises faster, because more steam is produced (water vapor occupies more space at the same temperature than liquid water).

The difference between boundary layer and bulk pressure values in the cooling phase is a numerical artifact.

November 22, 2012

© Prof. Dr. François E. Cellier

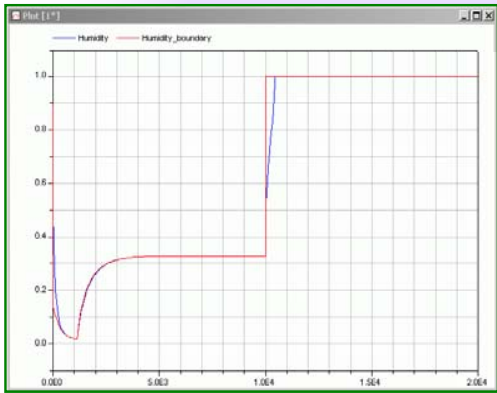
Start Presentation



Eidgenössische Technische Hochschule Zürich
Swiss Federal Institute of Technology Zürich

Mathematical Modeling of Physical Systems


Simulation Results IV




The relative humidity decreases at first, because the saturation pressure rises with temperature, i.e., more humidity can be stored at higher temperatures.

As boiling begins, the humidity rises sharply, since additional vapor is produced.

In the cooling phase, the humidity quickly goes into saturation, and stays there, because the only way to ever get out of saturation again would be by reheating the water.

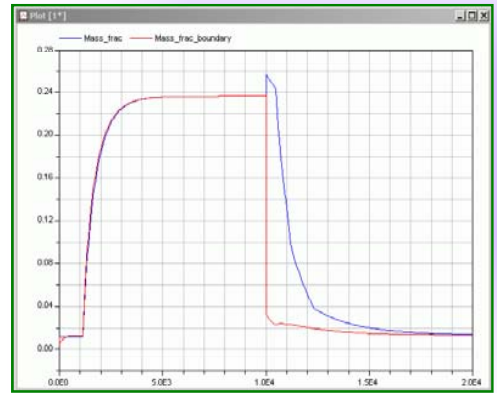
November 22, 2012
© Prof. Dr. François E. Cellier
Start Presentation




Eidgenössische Technische Hochschule Zürich
Swiss Federal Institute of Technology Zürich

Mathematical Modeling of Physical Systems


Simulation Results V




The *mass fraction* defines the percentage of water vapor contained in the air/steam mixture.

Until the water begins to boil, the mass fraction is constant. It then rises rapidly until it reaches a new equilibrium, where evaporation and condensation balance out.

During the cooling phase, the boundary layer cools down quickly, and can no longer hold the water vapor contained. Some falls out as water, whereas other steam gets pushed into the bulk, temporarily increasing the mass fraction there even further.

November 22, 2012
© Prof. Dr. François E. Cellier
Start Presentation






Eidgenössische Technische Hochschule Zürich
Swiss Federal Institute of Technology Zürich

Mathematical Modeling of Physical Systems

Free Convective Mass Flow

- We are now ready to discuss *free convective mass flow*, such as mass flow occurring in a segment of a pipe.
- The convective mass flow occurs because more mass is pushed in from one end, pushing the mass currently inside the pipe segment out by the other end.
- To this end, we need to introduce some more models.

November 22, 2012
© Prof. Dr. François E. Cellier
Start Presentation





Eidgenössische Technische Hochschule Zürich
Swiss Federal Institute of Technology Zürich

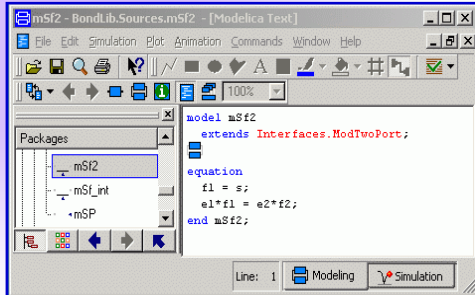
Mathematical Modeling of Physical Systems


The Forced Flow Source

- This model describes an element of the regular bond-graph library.

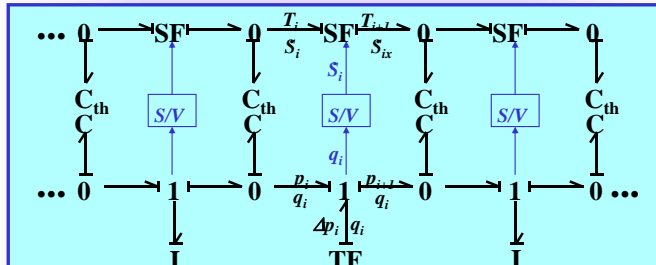


The primary side is a flow source, the secondary side can be either a flow or an effort source. Its equation is defined to satisfy power continuity across the element.



November 22, 2012
© Prof. Dr. François E. Cellier
Start Presentation


Density and Specific Entropy I



- As mentioned some lectures ago, we shall need modulated flow sources (as introduced one slide ago) that are modulated by the specific entropy and/or the specific mass (i.e., the density).

November 22, 2012

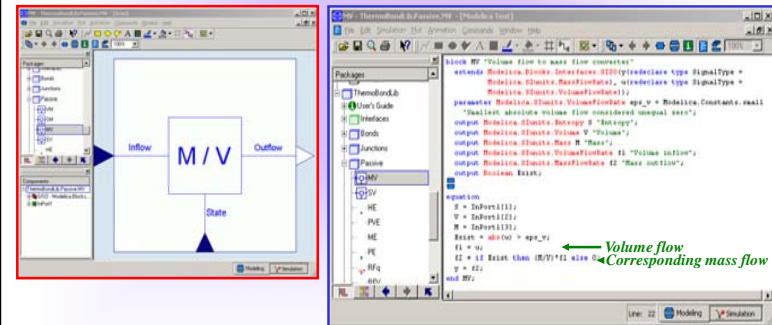
© Prof. Dr. François E. Cellier

Start Presentation



Density and Specific Entropy II

- These models are created as blocks:



November 22, 2012

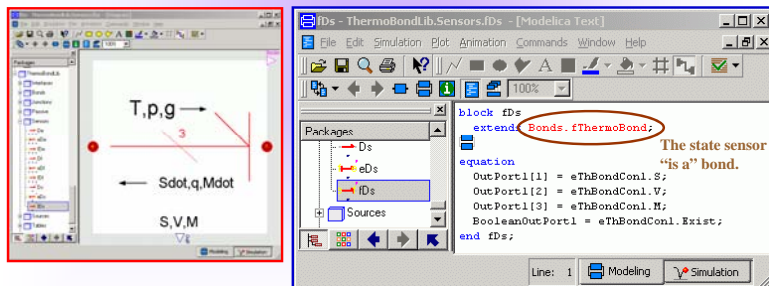
© Prof. Dr. François E. Cellier

Start Presentation



The State Sensor

- Many elements that are related to substances require state information. This is generated by a specialized thermo-bond, the so-called *state sensor element*.



November 22, 2012

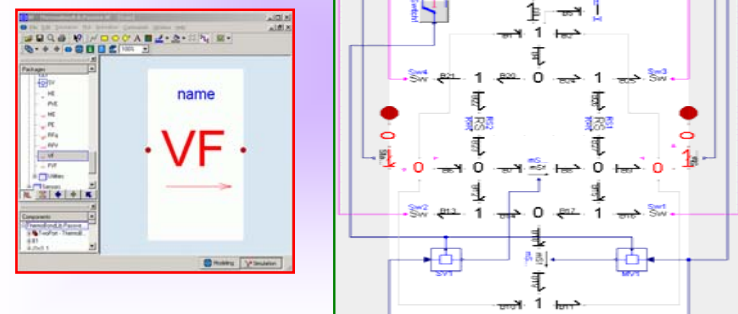
© Prof. Dr. François E. Cellier

Start Presentation



Free Convective Volume Flow

- We are now ready to describe the free convective volume flow.



November 22, 2012

© Prof. Dr. François E. Cellier

Start Presentation



ETH
Eidgenössische Technische Hochschule Zürich
Swiss Federal Institute of Technology Zürich

Mathematical Modeling of Physical Systems

November 22, 2012

© Prof. Dr. François E. Cellier

Start Presentation

ETH
Eidgenössische Technische Hochschule Zürich
Swiss Federal Institute of Technology Zürich

Mathematical Modeling of Physical Systems

The volume flow is modeled as a wave equation with friction. The friction is in parallel with the inertia.

The flow is measured using a flow sensor element. The additional entropy generated by friction is reintroduced in the down-wind direction, i.e., in the direction of the flow. Switch elements are used to determine the reintroduction point.

Non-linear flow sources are used to model the parallel thermal and mass flows.

These are computed by converting the volume flows to consistent entropy and mass flows.

November 22, 2012

© Prof. Dr. François E. Cellier

Start Presentation

ETH
Eidgenössische Technische Hochschule Zürich
Swiss Federal Institute of Technology Zürich

Mathematical Modeling of Physical Systems

State sensor elements are used to determine the current values of volume, entropy, and mass.

Up-wind state information is being used to convert the volume flow into consistent entropy and mass flows.

Since entropy doesn't need to be preserved, the non-linear flow source is inserted directly into the thermal branch.

Since mass flow must be preserved, the non-linear flow source is inserted under a 1-junction in the mass flow branch.

To move mass with the volume, additional energy is needed that is taken from the thermal domain.

November 22, 2012

© Prof. Dr. François E. Cellier

Start Presentation

ETH
Eidgenössische Technische Hochschule Zürich
Swiss Federal Institute of Technology Zürich

Mathematical Modeling of Physical Systems

Forced Convective Volume Flow


- We are now ready to describe the forced convective mass flow.

The model is almost the same as the free convective flow model, except that a volume flow is forced on the system through the regular bond connector at the top, replacing the inductor.

November 22, 2012

© Prof. Dr. François E. Cellier

Start Presentation



ETH

Eidgenössische Technische Hochschule Zürich
Swiss Federal Institute of Technology Zürich

Mathematical Modeling of Physical Systems


Comparison With *Biosphere 2*


- In the *Biosphere 2* model, only the (sensible and latent) heat were modeled. The mass flows were not considered.
- Consequently, you never know in the *Biosphere 2* model, how much water is available where. It is always assumed that the pond never dries out, and that the plants always have enough water to be able to evaporate in accordance with their temperature and saturation pressure.
- In the case of the *pressure cooker* model, both the mass flows and the heat flows were modeled and simulated. Consequently, the case is caught, where all the water has evaporated, while the air/steam mixture is still not fully saturated.

November 22, 2012

© Prof. Dr. François E. Cellier

Start Presentation





ETH

Eidgenössische Technische Hochschule Zürich
Swiss Federal Institute of Technology Zürich

Mathematical Modeling of Physical Systems


References I


- Cellier, F.E. and J. Greifeneder (2003), “[Object-oriented modeling of convective flows using the Dymola thermo-bond-graph library](#),” *Proc. ICBGM'03, Intl. Conference on Bond Graph Modeling and Simulation*, Orlando, FL, pp. 198 – 204.
- Greifeneder, J. and F.E. Cellier (2001), “[Modeling multi-element systems using bond graphs](#),” *Proc. ESS'01, European Simulation Symposium*, Marseille, France, pp. 758 – 766.
- Cellier, F.E. and J. Greifeneder (2008), “[ThermoBondLib – A New Modelica Library for Modeling Convective Flows](#),” *Proc. Modelica'08*, Bielefeld, Germany, pp. 163 – 172.

November 22, 2012

© Prof. Dr. François E. Cellier

Start Presentation





ETH

Eidgenössische Technische Hochschule Zürich
Swiss Federal Institute of Technology Zürich

Mathematical Modeling of Physical Systems

References II

- Cellier, F.E. (2007), [The Dymola Bond-Graph Library](#), Version 2.3.
- Cellier, F.E. (2007), [The Dymola Thermo-Bond-Graph Library](#), Version 2.0.

November 22, 2012

© Prof. Dr. François E. Cellier

Start Presentation

